

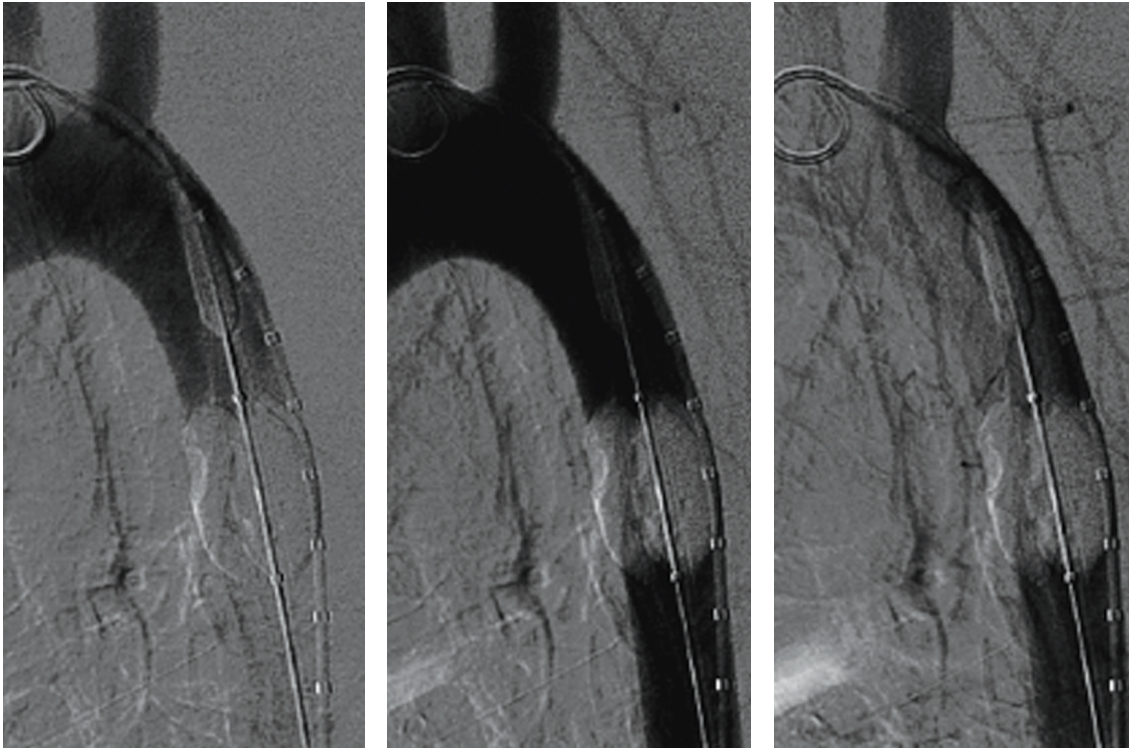
## GORE® TRI-LOBE BALLOON CATHETER

- Allows continuous flow around lobes while inflated
  - Allows continuous flow around lobes while inflated
  - Allows ~80% of flow for distal perfusion
- Decreased hemodynamic pressure on inflated balloons
- Compliant polyurethane balloons
- Rapid inflation and deflation
- Uniform and simultaneous lobe inflation
- Available in two 18 Fr Introducer Sheath compatible sizes
  - Small for 16–32 mm vessel diameters
  - Large for 26–42 mm vessel diameters



*Large Balloon Catheter in GORE® TAG® Thoracic Endoprosthesis*

## Unique Tri-Lobe design allows continuous blood flow



Flow Demo in Porcine Model

## GORE® Tri-Lobe Balloon Catheter inflation volume guide

### BCM1634 – 10 mm Balloon Catheter

Intended aortic diameter (mm)	Recommended inflation volume (ml)
16	4
20	6
24	8
28	10
32	13

### BCL2645 – 16 mm Balloon Catheter

Intended aortic diameter (mm)	Recommended inflation volume (ml)
26	12
30	14
34	18
38	21
42	25

 Consult Instructions for Use  
[eifu.goremedical.com](http://eifu.goremedical.com)

Refer to *Instructions for Use* at [goremedical.com](http://goremedical.com) for a complete description of all applicable indications, warnings, precautions and contraindications for the markets where this product is available. Rx Only

Products listed may not be available in all markets.

GORE, *Together, improving life*, TAG and designs are trademarks of W. L. Gore & Associates.  
 © 2021 W. L. Gore & Associates, Inc. 2039001-EN JANUARY 2021

W. L. Gore & Associates, Inc.  
[goremedical.com](http://goremedical.com)

Asia Pacific +65 67332882 Australia/New Zealand 1800 680 424 Europe 00800 6334 4673  
 United States Flagstaff, AZ 86004 800 437 8181 928 779 2771

