

**GORE® TAG®**  
Thoracic Branch Endoprosthesis

# A SIMPLIFIED SOLUTION WITHIN REACH

GET STARTED



*Together, improving life*



# FIRST-OF-ITS KIND FDA APPROVED DEVICE

Designed for simplified, minimally invasive zone 2 TEVAR procedures.

- Deliver results without the potential risk and complexity of revascularization.

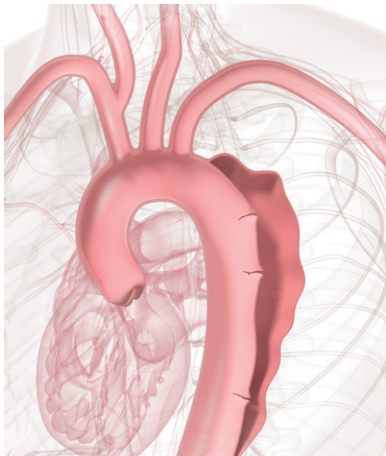


# ~40%

of all TEVARs involve zone 2 landing<sup>1</sup>

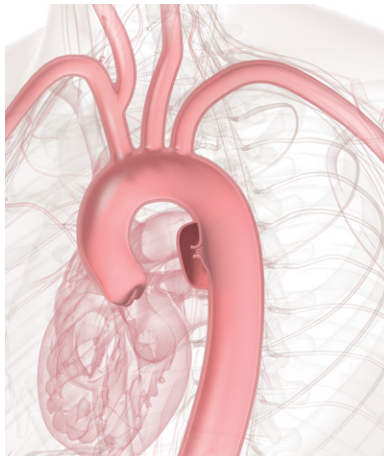
# 72%

of all Type B dissections<sup>1</sup>



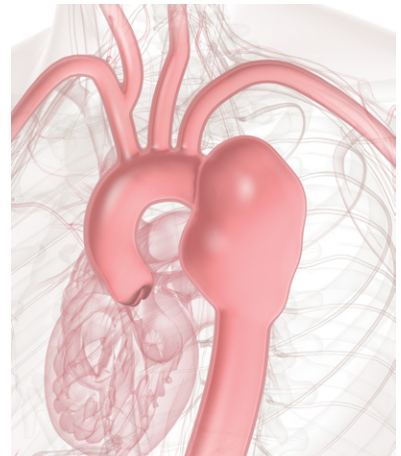
# 59%

of traumatic transections<sup>1</sup>



# 30%

of descending thoracic aneurysms<sup>1</sup>



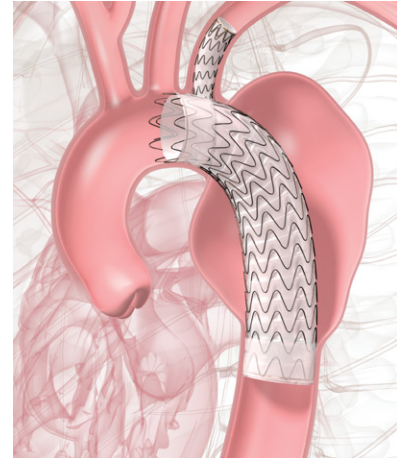
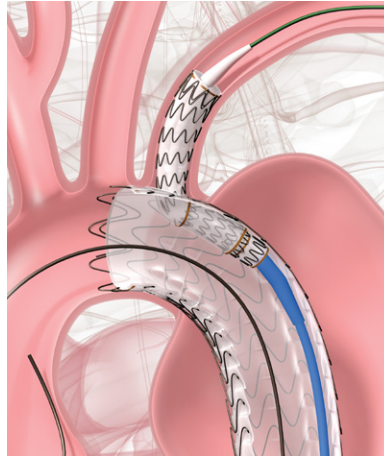
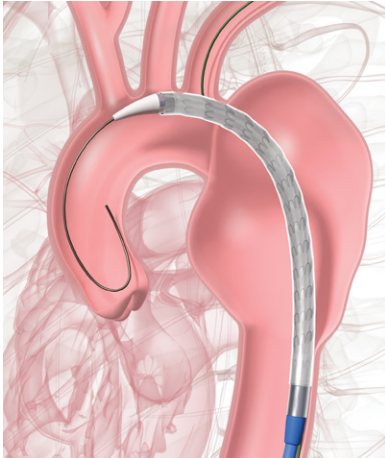
SEE THE DATA



# Single device, single procedure.

Eliminates the surgical staging and procedure to help simplify the treatment of zone 2 left subclavian artery (LSA) revascularization.

- No reported phrenic nerve injuries<sup>2</sup>
- 25% potential reduction in hospital length of stay<sup>3</sup>



WATCH THE DEPLOYMENT



## High patency, low disabling stroke rate:



99.2% LSA branch patency<sup>\*,2</sup>



3.4% disabling stroke rate



Avoid LSA surgical revascularization procedure and related risks<sup>3</sup>

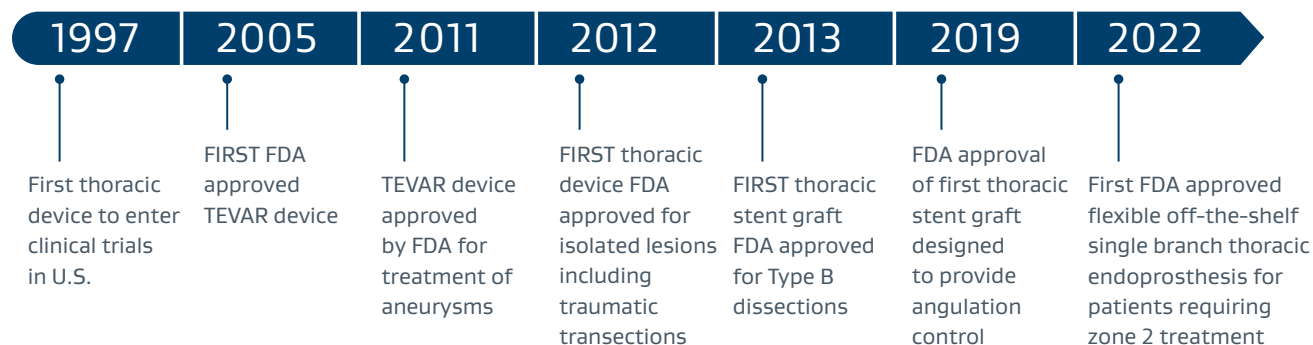
\* 100% freedom from reintervention due to loss of LSA patency.  
† Through 12 months.

HISTORY OF INNOVATION



# Built on the history of innovation of the GORE® TAG® Device family

Focused on the future, powered by the past.



Contact your Gore representative for additional information

## References

1. OP916 Dake MD, Brinkman WT, Han SM, et al. Outcomes of endovascular repair of aortic aneurysms with the GORE® Thoracic Branch Endoprosthesis for left subclavian artery preservation. *Journal of Vascular Surgery*. In press. Open access <https://www.sciencedirect.com/science/article/pii/S0741521422016421>.
2. Squiers JJ, DiMaio JM, Schaffer JM, et al. Surgical debranching versus branched endografting in zone 2 thoracic endovascular aortic repair. *Journal of Vascular Surgery* 2022;75(6):1829-1836.e3.
3. GORE® TAG® Thoracic Branch Endoprosthesis. [Instructions for Use]. Flagstaff, AZ: W. L. Gore & Associates, Inc. 2022; MD184153. Rev. 2.

 Consult Instructions for Use  
[eifu.goremedical.com](http://eifu.goremedical.com)

**INDICATIONS FOR USE IN THE U.S.:** The GORE® TAG® Thoracic Branch Endoprosthesis is indicated for endovascular repair of lesions of the descending thoracic aorta, while maintaining flow into the left subclavian artery, in patients who have: **Adequate iliac/femoral access; Proximal Aortic Landing Zones:** For Isolated Lesion Patients: Non-aneurysmal, dissected, heavily calcified, or heavily thrombosed proximal landing zone; For Dissection Patients: Primary entry tear must be distal to the left subclavian artery and the proximal extent of the landing zone must not be dissected; Aortic inner diameter range 16-42 mm; Proximal segment length (length from distal edge of left subclavian artery to mid left common carotid ostium) of at least 2.0-4.0 cm, depending on Aortic Component selection; Proximal covered length (measured from distal edge of left subclavian artery to distal edge of left common carotid artery ostium) of at least 15-36 mm, depending on Aortic Component selection; For patients with prior ascending aorta or aortic arch repair with surgical graft: at least 2 cm landing zone proximal to the distal anastomosis; **Left Subclavian Landing Zone:** Landing zone cannot be aneurysmal, dissected, heavily thrombosed and severely tortuous (180 degree turn within the treated length); Left subclavian artery inner diameter of 6-18 mm, depending on Side Branch Portal diameter selected; Left subclavian artery minimum length of 2.5-3.0 cm, depending on Side Branch Portal diameter selected. **Distal Landing Zone (Isolated Lesion Patients only):** Outer curve length must be ≥ 2 cm proximal to celiac artery; Aortic inner diameter range 16-42 mm; Non aneurysmal, dissected, heavily calcified, or heavily thrombosed landing zone; Native Aorta or previously placed GORE® TAG® Conformable Thoracic Stent Graft. **Contraindications:** The GORE® TAG® Thoracic Branch Endoprosthesis is contraindicated in: Patients with known sensitivities or allergies to the device materials [ePTFE (polytetrafluoroethylene), FEP (fluoroethylpropylene), Nitinol (nickel, titanium), Gold, SB Component only - Heparin (CBAS® Heparin Surface)]; Patients who have a condition that threatens to infect the graft; Patients with known hypersensitivity to heparin, including those patients who have had a previous incident of Heparin-Induced Thrombocytopenia (HIT) type II. Refer to *Instructions for Use* at [eifu.goremedical.com](http://eifu.goremedical.com) for a complete description of all applicable indications, warnings, precautions and contraindications for the markets where this product is available. Rx Only

Products listed may not be available in all markets.

CBAS is a trademark of Carmeda AB, a wholly owned subsidiary of W. L. Gore & Associates, Inc.

GORE, Together, improving life, TAG and designs are trademarks of W. L. Gore & Associates.

© 2022, 2023 W. L. Gore & Associates, Inc. 231140972-EN OCTOBER 2023

W. L. Gore & Associates, Inc.  
[goremedical.com](http://goremedical.com)

Asia Pacific +65 67332882 Australia / New Zealand 1800 680 424 Europe 00800 6334 4673  
United States Flagstaff, AZ 86004 800 437 8181 928 779 2771

