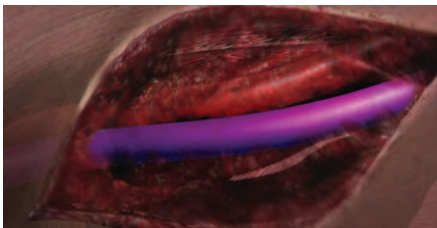


Standard Implantation Technique

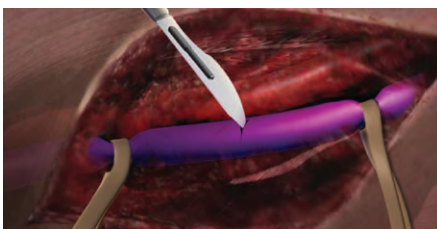
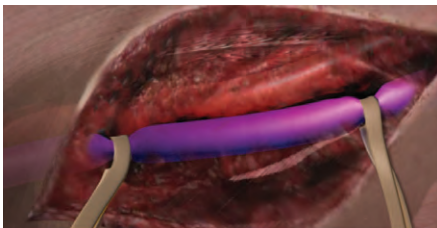
PERFORMANCE through innovation

1



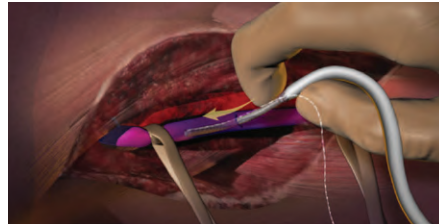
Perform a conventional cut-down and dissection to the level of the vessel.

2

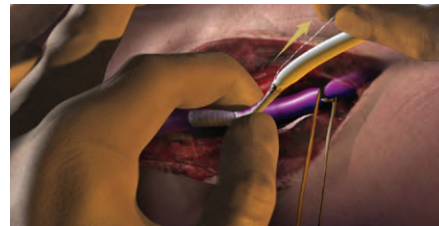


The length and direction of venotomy / arteriotomy is at the physician's discretion.

3



Introduce at least 2.5 cm of the nitinol reinforced section of the GORE® Hybrid Vascular Graft into the vessel.



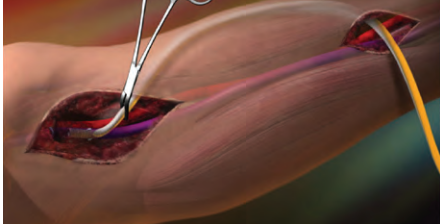
While stabilizing the nitinol reinforced section, pull the deployment line parallel to the vascular graft section.

4



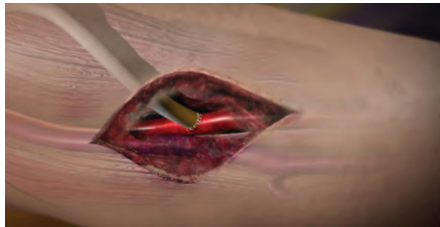
Place two longitudinal stay sutures through the vessel wall and the nitinol reinforced section, spaced approximately 180° apart, in order to provide additional anchoring to the vessel wall.

5



Tunnel the device carefully towards the arterial anastomosis site while maintaining the secure placement of the nitinol reinforced section.

6



Suture the arterial anastomosis in a standard manner.



W. L. GORE & ASSOCIATES, INC.

Flagstaff, AZ 86004

+65.67332882 (Asia Pacific)


00800.6334.4673 (Europe)

800.437.8181 (United States)

928.779.2771 (United States)

goremedical.com

Products listed may not be available in all markets.
GORE®, PERFORMANCE THROUGH INNOVATION,
and designs are trademarks of W. L. Gore & Associates.
© 2010 W. L. Gore & Associates, Inc. AP0554-EN1 OCTOBER 2010

 Consult Instructions for Use