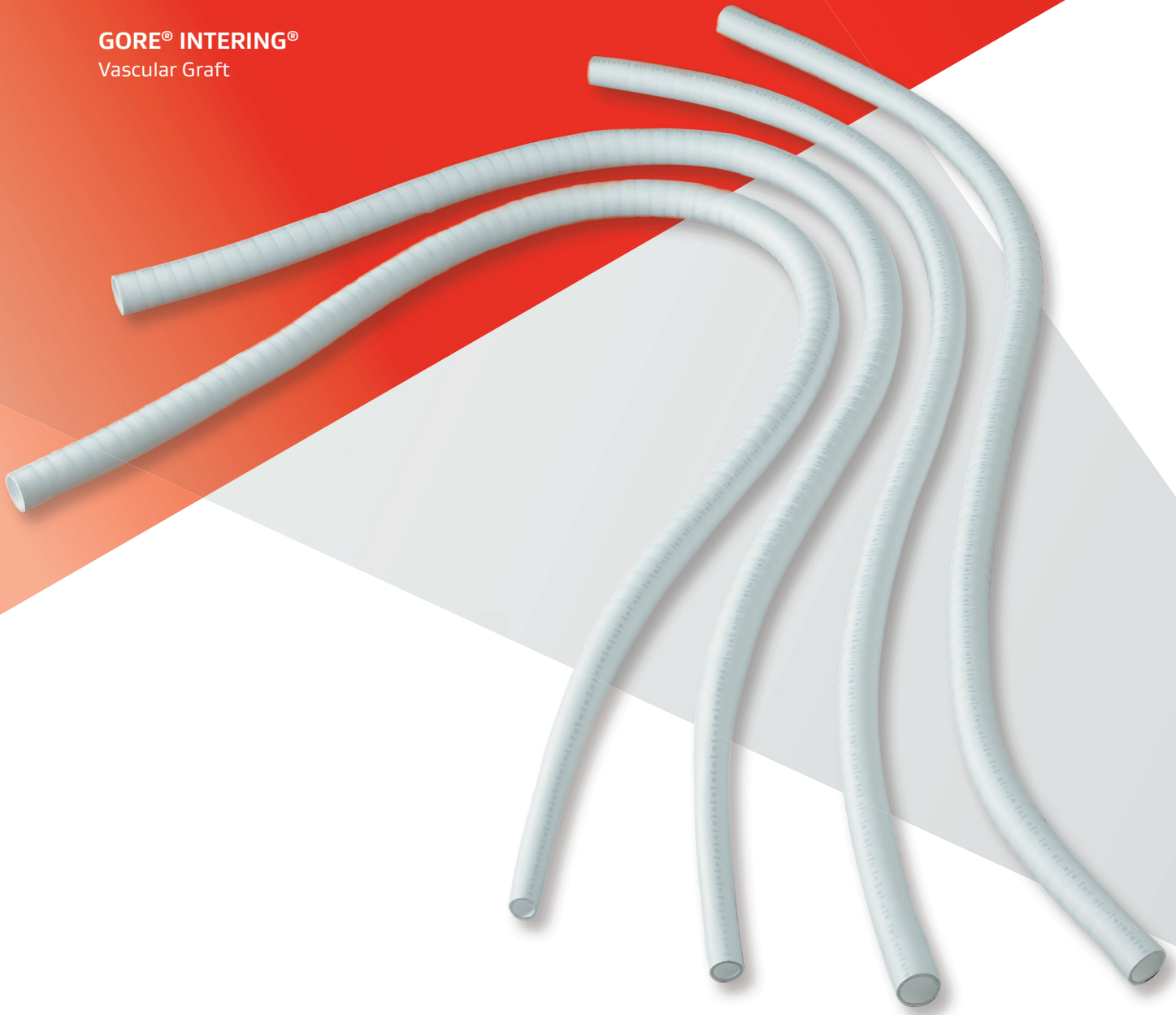


# SMOOTH MOVE

**GORE® INTERING®**  
Vascular Graft



*Together, improving life*



The lowest-profile, radially supported ePTFE graft available for vascular access

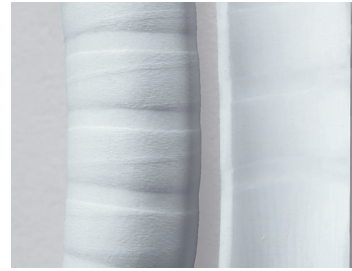
An option that offers all the benefits of a ringed graft – without the rings

Kink and compression resistance due to ePTFE radial support concealed within the ultra-smooth graft wall

- No-profile radial support
- All-ePTFE unibody graft
- Smooth luminal surface
- Cut and suture anywhere

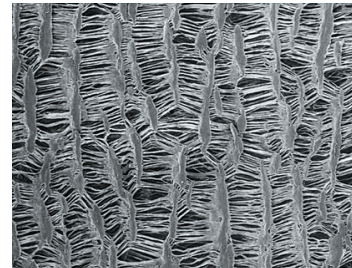
## No-profile radial support

The integrated radial support within the GORE® INTERING® Vascular Graft reduces the cross-sectional area by approximately 24% compared to an externally ringed graft while maintaining the same luminal diameter



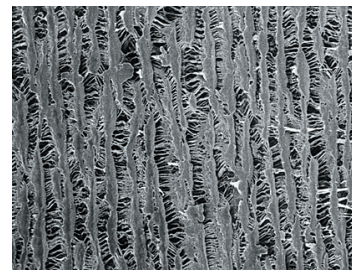
### All-ePTFE unibody graft

Microstructure of GORE® INTERING® Vascular Graft



500x magnification  
100μ

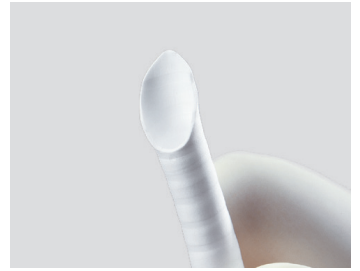
Microstructure of ePTFE radial support within the GORE® INTERING® Vascular Graft



500x magnification  
100μ

# Cut and suture anywhere

- Bevel cut of the GORE® INTERING® Vascular Graft



- Cutting a window in the GORE® INTERING® Vascular Graft



- Window graftotomy in the GORE® INTERING® Vascular Graft



- Creating end-to-side anastomosis between GORE® INTERING® Vascular Grafts and GORE-TEX® Suture

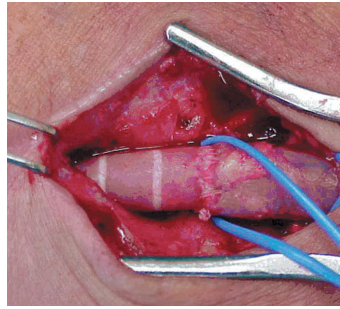


---

Smooth luminal surface of the ePTFE radially supported section of the GORE® INTERING® Vascular Graft

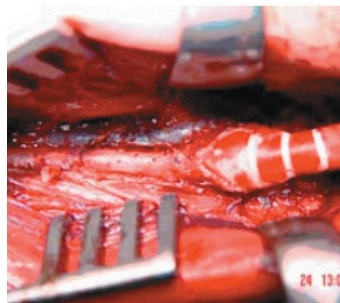
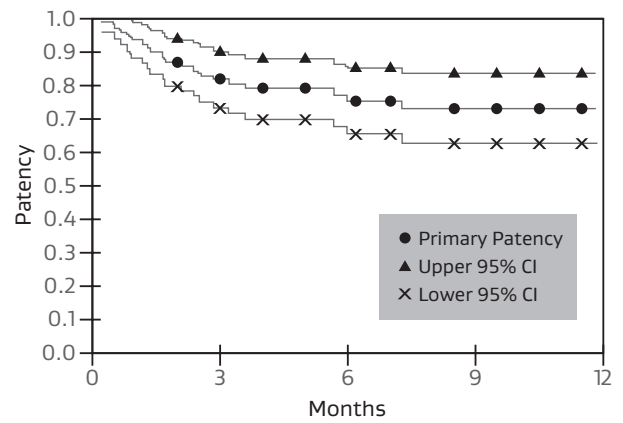
---





Completed end-to-end,  
GORE® INTERING® Vascular Graft-to-vein  
anastomosis with GORE-TEX® Suture

One-year primary patency  
GORE® INTERING® Vascular Graft  
**73% (n = 86)\***

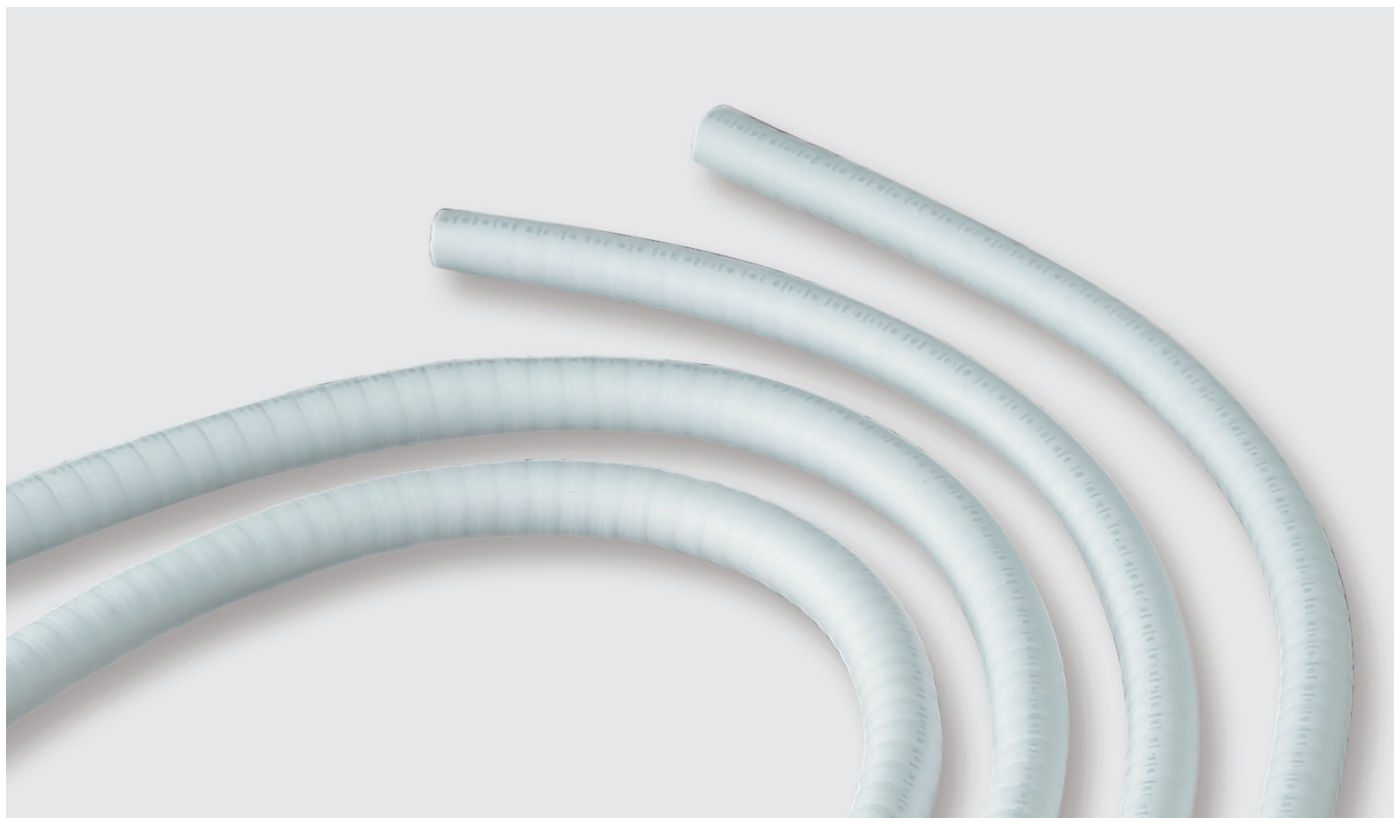


Radial reinforcement at the anastomosis  
to maximize the anastomotic opening.

\* Thibodeaux LC, Reyes AA. Initial experience with an intrawall, radially supported expanded polytetrafluoroethylene graft for vascular access. In: Henry ML, ed. Vascular Access for Hemodialysis -IX. Los Angeles, CA.: W.L. Gore & Associates, Inc. & Bonus Books, Inc;2005:19:195-201.



# Combining the best



The GORE® INTERING® Vascular Graft combines the advantages of ringed and non-ringed vascular grafts with a unique design and wide array of features and benefits:

- Reinforced ePTFE
- Longitudinal extensibility inherent in GORE-TEX® STRETCH Vascular Grafts
- Integrated radial support that resists kinking and compression
- Diameter to diameter, up to 24% reduced profile, compared to an externally supported ringed or spiral graft
- Easier placement through a tissue tunnel compared to ringed vascular grafts
- The ability to cut and sew through the radial support anywhere along the entire length of the graft

The versatility of the GORE® INTERING® Vascular Graft lends its use to a variety of surgical procedures:

- Lower limb bypass; above- or below-knee reconstructions
- Extra-anatomic procedures
- Vascular access grafts

---

The GORE® INTERING® Vascular Graft can address a variety of clinical applications, which in turn may streamline operating room inventory and reduce carrying costs.

---

## Vascular access standard walled graft

CATALOGUE NUMBER	DIAMETER	RADIALLY SUPPORTED LENGTH	OVERALL LENGTH
<b>STRETCH</b>			
IRS46045LE	4 – 6 mm	38 cm	45 cm
IRS47045LE	4 – 7 mm	38 cm	45 cm
IRS06040LE	6 mm	40 cm	40 cm
IRS06005045LE	6 mm	5 cm	45 cm
<b>REVISION STRETCH GRAFT</b>			
IRS06005020LE	6 mm	5 cm	20 cm
IRS06010020LE	6 mm	10 cm	20 cm

## Peripheral thin-walled stretch graft

CATALOGUE NUMBER	DIAMETER	RADIALLY SUPPORTED LENGTH	OVERALL LENGTH
<b>STRETCH</b>			
IRST06040040LE	6 mm	40 cm	40 cm
IRST06060060LE	6 mm	60 cm	60 cm
IRST06080080LE	6 mm	80 cm	80 cm
IRST07040040LE	7 mm	40 cm	40 cm
IRST07060060LE	7 mm	60 cm	60 cm
IRST07080080LE	7 mm	80 cm	80 cm
IRST08040040LE	8 mm	40 cm	40 cm
IRST08060060LE	8 mm	60 cm	60 cm
IRST08080080LE	8 mm	80 cm	80 cm

 Consult Instructions  
for Use  
[eifu.goremedical.com](http://eifu.goremedical.com)

Refer to *Instructions for Use* at [eifu.goremedical.com](http://eifu.goremedical.com) for a complete description of all applicable indications, warnings, precautions and contraindications for the markets where this product is available. Rx only

Products listed may not be available in all markets.

GORE, GORE-TEX, *Together, improving life*, INTERING and designs are trademarks of W. L. Gore & Associates.  
© 2022 W. L. Gore & Associates GmbH 22739547 OCTOBER 2022

W. L. Gore & Associates, Inc.  
[goremedical.com](http://goremedical.com)

Asia Pacific +65 6733 2882 Australia/New Zealand 1800 680 424 Europe 00800 6334 4673  
United States Flagstaff, AZ 86004 800 437 8181 928 779 2771

